



# EXISTING DURHAM COUNTY YOUTH HOME



## EXISTING FACILITY



EXTERIOR VIEW AT ENTRANCE



INTERIOR VIEW OF DAYROOM

## HIGHLIGHTS

- Built in 1983
- Challenges with the facility
- Increase in bed space needs due to “Raise the Age” and sight & separation requirements for JJDP



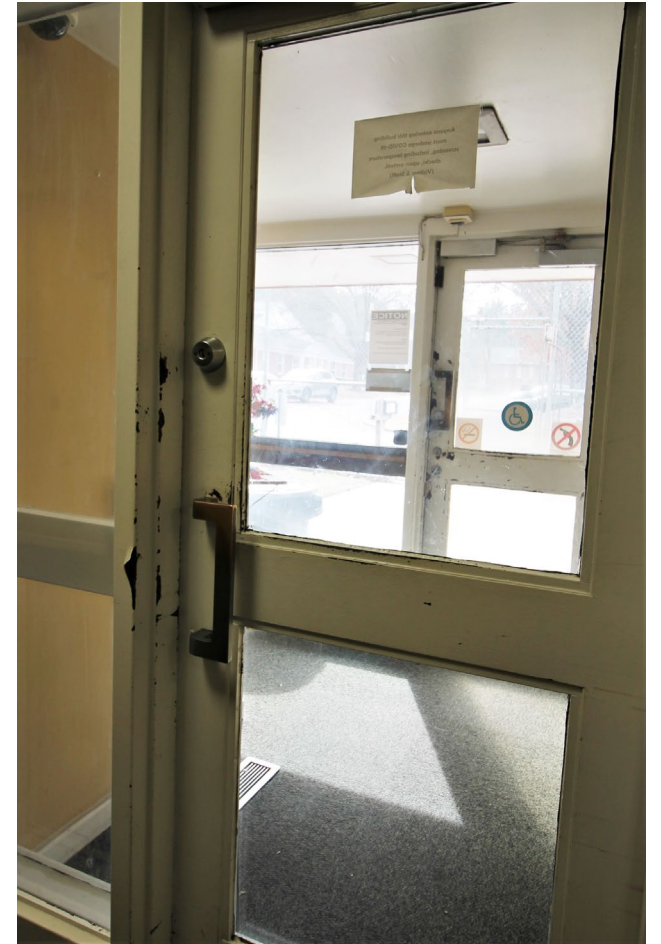
EXTERIOR VIEW FROM BROAD STREET

**DURHAM COUNTY YOUTH HOME**

# EXISTING FACILITY



FRONT ENTRANCE



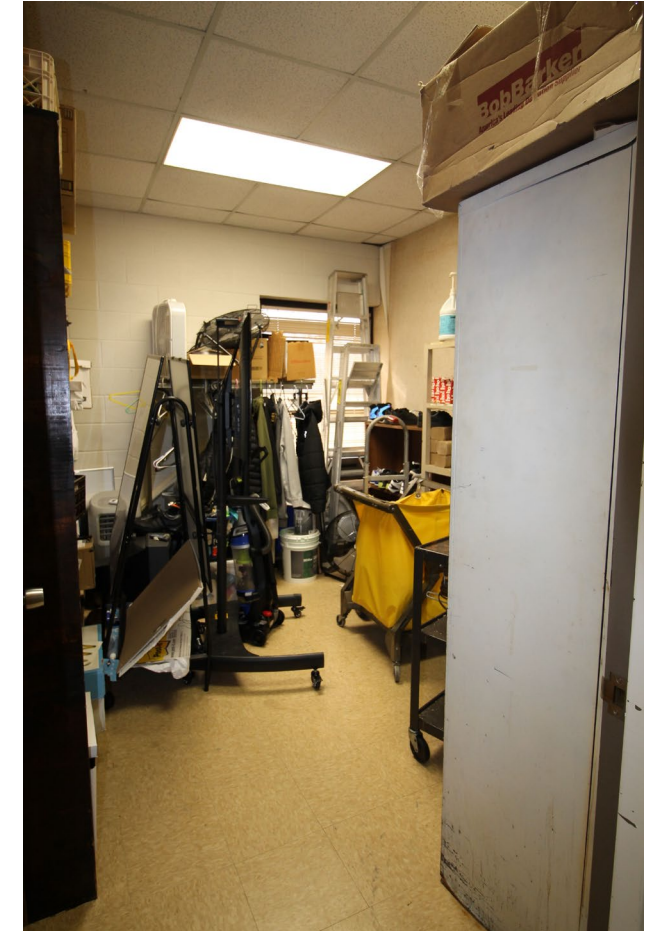
ENTRANCE VESTIBULE (SALLY PORT)

## DURHAM COUNTY YOUTH HOME

# EXISTING FACILITY



RECEPTION/WAITING/GUARD STATION



OFFICE USED FOR STORAGE

DURHAM COUNTY YOUTH HOME

## EXISTING FACILITY



CORRIDOR TO MEDICAL UNIT



MEDICAL UNIT (EXAM ROOM, DOCTOR'S OFFICE & MEDICAL STORAGE)

**DURHAM COUNTY YOUTH HOME**

# EXISTING FACILITY



DAYROOM



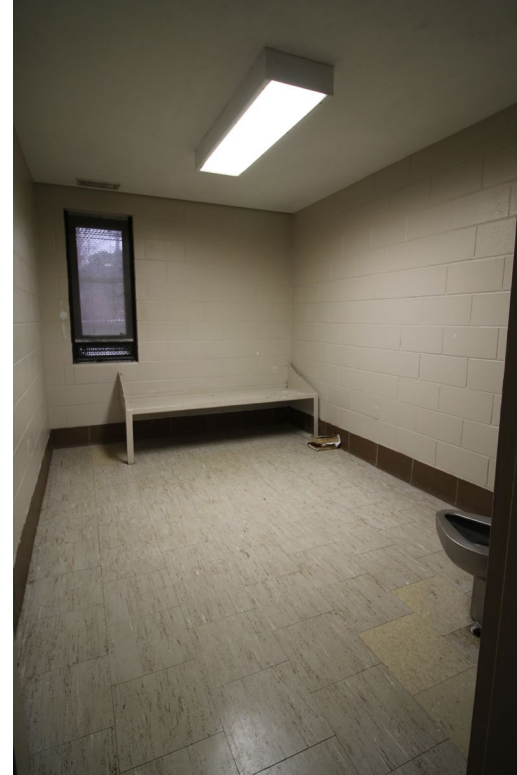
LAUNDRY FACILITIES (INSIDE DAYROOM)

**DURHAM COUNTY YOUTH HOME**

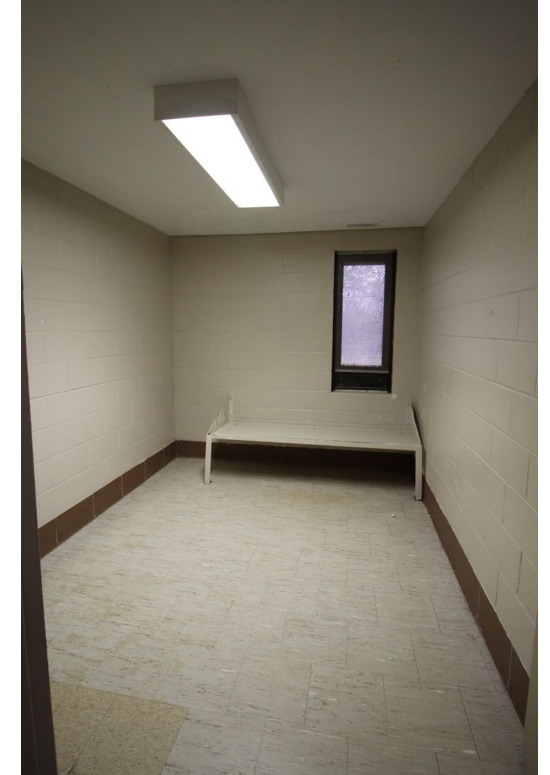
# EXISTING FACILITY



CLASSROOM



SLEEPING ROOM W/TOILET



SLEEPING ROOM, DRY

DURHAM COUNTY YOUTH HOME

# EXISTING FACILITY



INTAKE AREA



INTAKE/VISITATION



VISITATION ROOM

## DURHAM COUNTY YOUTH HOME



## **NEW FACILITY IMPROVEMENTS**

- Welcoming entrance lobby and comfortable waiting areas for visitors
- Visitation area with tables/chairs for families, and private rooms for legal consultations
- Separate intake area with changing rooms, and processing area for multiple staff members
- Four separate housing units, each with generous dayroom and showers
- Sleeping rooms with wood-look beds and toilet/sink units
- Classrooms with flexible furnishings and video conferencing/virtual learning capability
- Medical suite with exam room, separate doctor's office, locking storage room, and Nurse Station
- Separate Laundry facility with storage
- Indoor recreation area with basketball/volleyball
- Outdoor recreation area with basketball, volleyball, open play area, and future gardening space
- Shelved storage rooms

**DURHAM COUNTY YOUTH HOME**

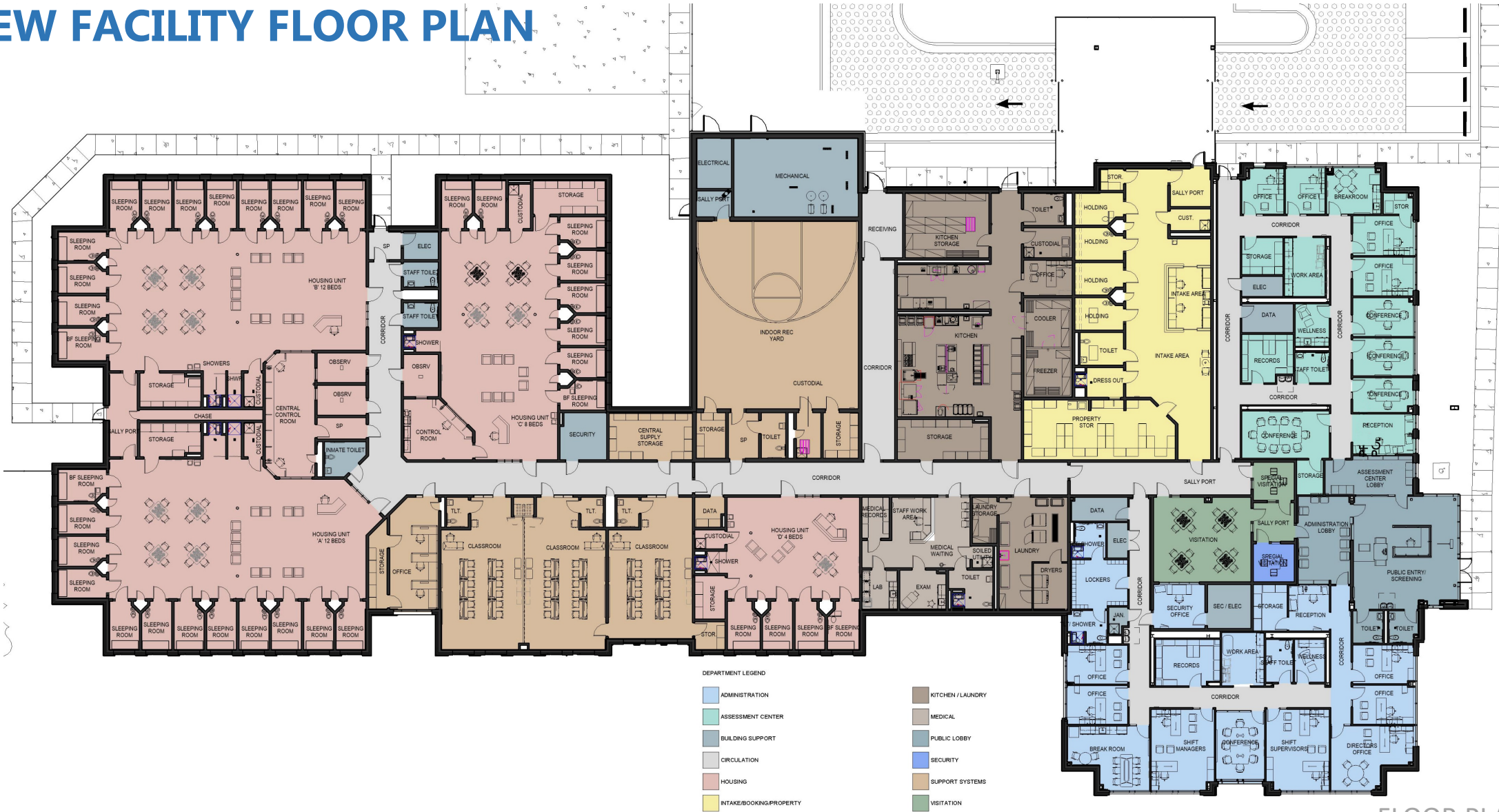
# PROJECT OVERVIEW



FRONT ENTRANCE

**DURHAM COUNTY** YOUTH HOME

# NEW FACILITY FLOOR PLAN



FLOOR PLAN

# DURHAM COUNTY YOUTH HOME