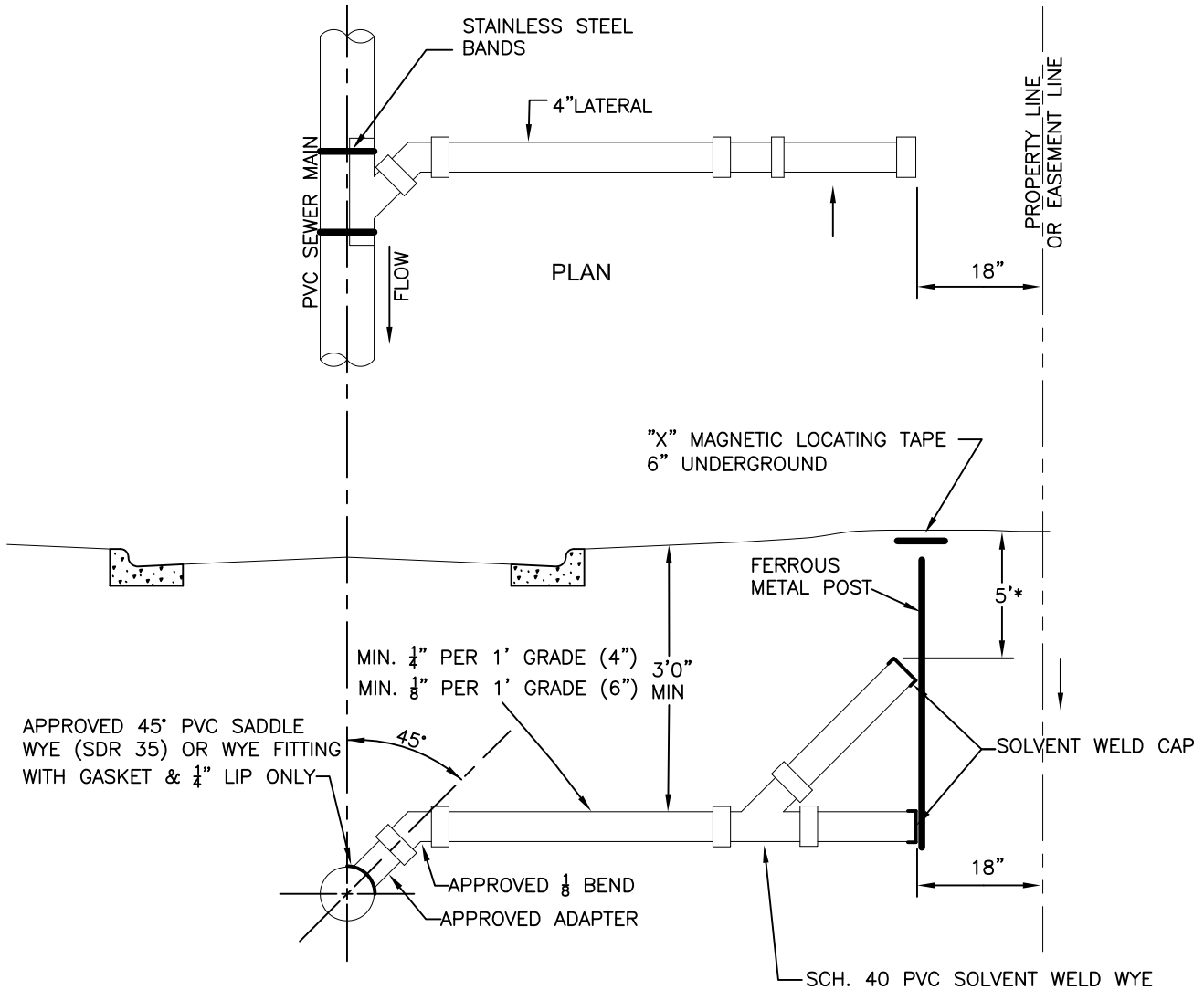




NOTE:  
 IN LINE WYE'S TO BE USED  
 WHERE POSSIBLE ON NEW  
 CONSTRUCTION AND REPAIR  
 PROJECTS.

\* INITIAL INSTALLATION BY DEVELOPER SHALL  
 BE TO A POINT WITHIN 5' OR LESS OF  
 EXISTING GROUND. REMAINDER OF  
 INSTALLATION SHALL BE BY PLUMBER AT  
 LATER DATE.



NOTE:  
 ANY LATERAL OVER 10.0 FT. IN DEPTH WILL BE RESTRAINED JOINT DIP 4" AND 6" LATERALS



SAB  
 APPROVED BY:

KFM  
 DRAWN BY:

DATE: 10/23/2018

## SANITARY SEWER LATERAL

DURHAM COUNTY, NORTH CAROLINA  
 ENGINEERING DEPARTMENT

SCALE:  
 NTS

DETAIL NO.  
 DUCO - 009