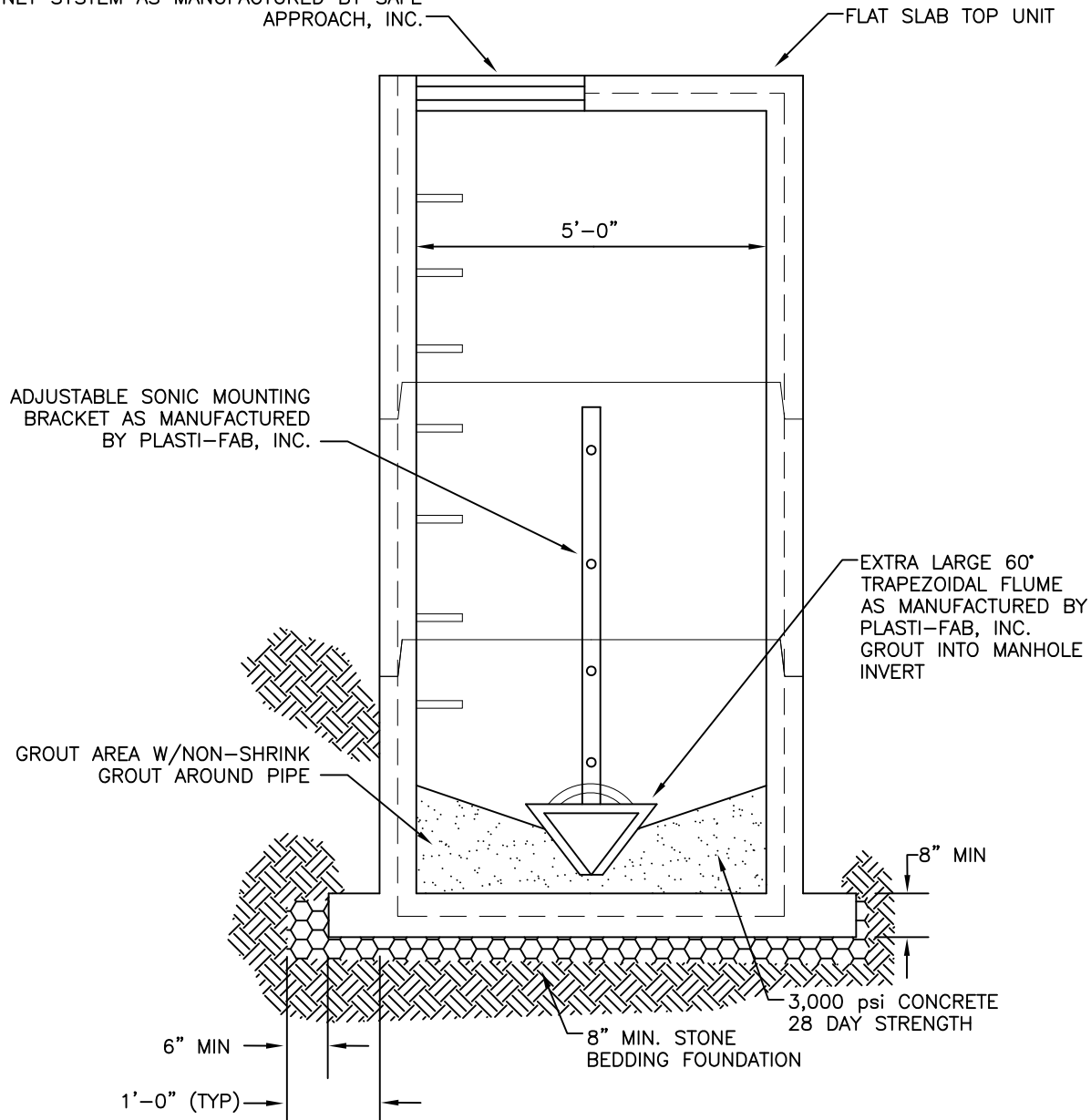


NOTE:

FLOW METER SYSTEM SHALL BE BY ISCO, MARSH McBIRNEY OR APPROVED EQUIVALENT. PROVIDE ULTRASONIC SENSOR, PERMANENTLY MOUNTED AC/DC POWERED MONITOR AT THE MANHOLE SITE. PROVIDE A SECOND FLOW MONITOR DISPLAY IN THE BUILDING (LOCATION DETERMINED BY OWNER). PROVIDE STAINLESS STEEL SUPPORTS AND HARDWARE FOR ALL DEVICES. ALL CABLES, WIRING, AND SIGNAL WIRES SHALL BE INSTALLED IN A NEMA 4X ENCLOSURE. PROVIDE PORTABLE COMPUTER HOOKUP AT BOTH LOCATIONS AND PROVIDE THE ASSOCIATE SOFTWARE FOR DOWNLOADING THE DATA. PROVIDE ALL COMPONENTS NECESSARY FOR TOTAL OPERATION.

HALLIDAY ALUMINUM HATCH (OR EQUIVALENT), NOT TO EXCEED 100 lbs. IN WEIGHT. ACCESS HATCH W/"HATCH NET" RAIL MOUNTED SAFETY NET SYSTEM AS MANUFACTURED BY SAFE APPROACH, INC.



SAB
APPROVED BY:

KFM
DRAWN BY:

DATE: 10/23/2018

PRECAST CONCRETE MONITORING MANHOLE

DURHAM COUNTY, NORTH CAROLINA
ENGINEERING DEPARTMENT

SCALE:
NTS

DETAIL NO.
DUCO - 019