



Durham County UTILITIES NEWS



FOURTH QUARTER



- ◆ Capital Improvement Updates - Page 1
- ◆ Open Positions - Page 1
- ◆ Current Construction FAQs - Pages 2 and 3
- ◆ Map of Current Construction - Page 4
- ◆ Tertiary Treatment Highlight - Page 5

CAPITAL IMPROVEMENT UPDATES

Chin Page Road Lift Station

Progress continues at the Chin Page Lift Station site as we move toward key project milestones. Permitting and easement acquisitions are still in progress. Early-out packages for long lead items and site clearing are currently being developed to maintain project momentum.

Shiloh Glenn and Wind River Lift Stations

Construction has started on the force main along Miami Boulevard, with on-site work officially beginning on 9/2. Tree conservation efforts are underway at the Liberty South parcel. The Wind River team is beginning to mobilize on site in preparation for construction. Groundbreaking is scheduled to take place soon. See pages 2-5 for construction FAQs.

Outfall Improvements Project

Stormwater Operations Specialists, the contractor for outfall/beaver maintenance, has performed some initial dam removals in Grandale's outfall.

Northeast Creek Modeling

Calibration of the model is nearly complete, with full completion expected in fall 2025. Discussions are underway to finalize the modeling approach for appropriating future flows. This will help ensure the model accurately reflects anticipated growth and system demands.

WASTEWATER FACT

Antidepressants and other meds flushed down toilets can end up in rivers. Some fish exposed to these drugs show weird behavior, like ignoring predators or acting abnormally bold.

OPEN POSITIONS

We are hiring! Pursue your passion for water quality and pivot into a career in public utilities. All of the County's open positions can be found and applied to at [County Careers link](#). Contact us with any questions you may have. Currently Utilities is hiring:

- [Water and Distribution Technician](#)
- [Operations and Maintenance Specialist II](#)



[Utilities Website](#)



919-560-9033



5926 NC Hwy 55 East,
Durham, NC 27713

What are they doing?



Slater Road Lift Station

Built in 1983, this lift station is being abandoned. Most above-ground structures, equipment, and concrete slabs will be removed. Below-ground mechanical equipment will also be removed, leaving the facility only to provide a potential connection point to the Town of Cary's adjacent sewer main. The fence and access road will remain.



Shiloh Glenn Lift Station

A new lift station with associated piping is being constructed at 1211 Shiloh Glenn Drive. It will have a firm capacity of roughly 1,100 gallons per minute (gpm) and include bar screens and a washer/compactor for debris removal. Pump motors will use variable frequency drives, and the piping consists of approximately 7,600 feet of 12-inch ductile iron force main and 225 feet of 12-inch gravity sewer main.



Wind River Lift Station

This project upgrades a 650-gpm vacuum-primed suction-lift station (built in 1997) to a 680-gpm submersible pump lift station. It is located at 200 Wind River Parkway, Morrisville, NC.

How long will it take?



- Slater Road: 1 month
- Shiloh Glenn: 16 months
- Wind River: 10 months

How much will it cost?



- Slater Road: \$121,178
- Shiloh Glenn: \$15,126,991
- Wind River: \$2,902,900

Who can I contact?



Durham County Utilities
919-560-9033 | utilities@dconc.gov



Crowder Construction, Austin Ash
919-302-9735 | wash@crowderusa.com

Is this going to cause road closures or traffic delays?



Slater Road Lift Station

Will not require any road closures or traffic delays.



Shiloh Glenn Lift Station

There will be lane closures to install the Force Main on Miami and Emperor. There will always be a route available, and the roads will not be completely closed. This shouldn't cause traffic delays.



Wind River Lift Station

There will be 1 lane closure adjacent to the lift station when performing the waterline hot tap in the road of the apartment complex that will only last a day or two. There will always be a route available, and the road in the apartment complex will not be completely closed.

Will my water/sewer be affected?



Water and sewer service will not be affected by construction during any of these projects.

Is the construction noisy or happening at night?



Slater Road Lift Station

All work will be during the day.



Shiloh Glenn Lift Station

All work at the lift station will be during the day. There are a few weeks of Force Main work that will need to be done on Miami Blvd at night.



Wind River Lift Station

All work will be during the day, besides 1 potential tie-in at night during startup.

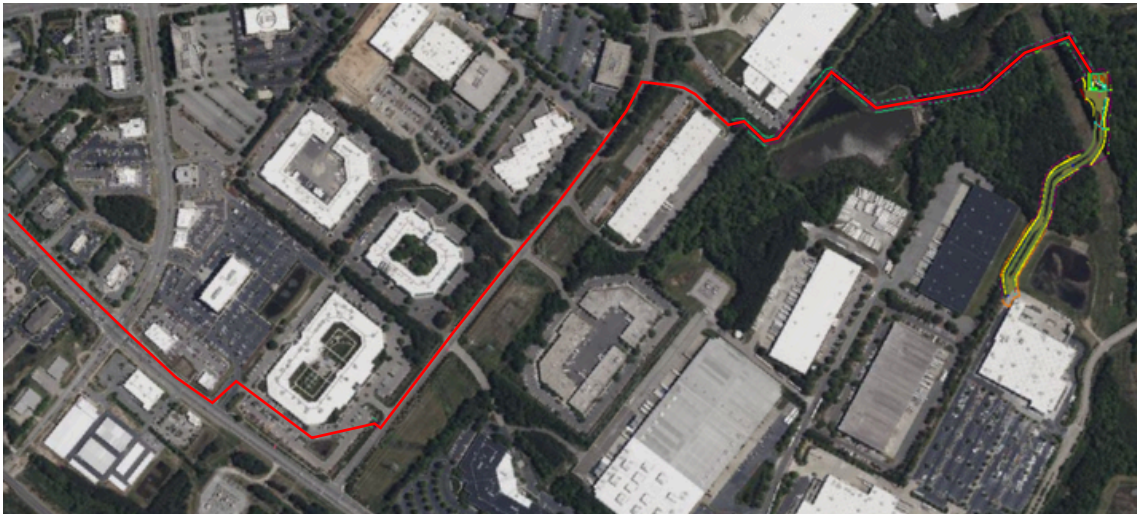
Slater Road Lift Station

4



763 Slater Rd.
Morrisville, NC

Shiloh Glenn Lift Station and Force Main



1211 Shiloh Glenn
Dr. Morrisville, NC

Wind River Lift Station Improvements



200 Wind River
Pkw Morrisville, NC



[Utilities Website](#)



919-560-9033



5926 NC Hwy 55 East,
Durham, NC 27713

Treatment Process Highlight: Tertiary Treatment

5

What is tertiary treatment?

Tertiary treatment is an advanced stage designed to make the effluent even cleaner and safer. During tertiary treatment, the water is filtered, disinfected, and often treated to remove excess nutrients like nitrogen and phosphorus that can harm aquatic ecosystems. Technologies used here may include sand or membrane filtration, UV or ozone disinfection, and chemical or biological nutrient removal. Once treated, the water is ready for its final destination: it can be safely discharged into rivers, lakes, or oceans, or reused for irrigation, industrial applications, or even purified further for potable reuse in some regions.

At the same time, the solid byproducts (sludge) from earlier stages go through sludge treatment processes like thickening, digestion, and dewatering, ensuring that biosolids are handled safely and sustainably. This sludge is often reused as fertilizers or sent to landfills.

