

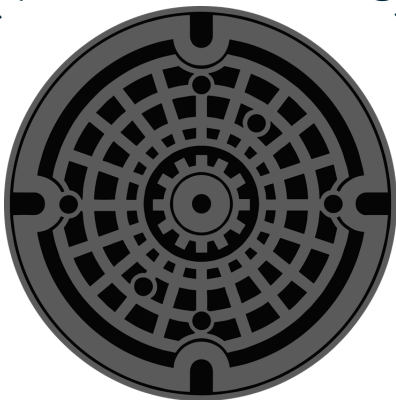


Durham County **UTILITIES NEWS**



FIRST QUARTER

IN THIS ISSUE



- ◆ Capital Improvement Updates - Page 1

- ◆ Open Positions - Page 1

- ◆ Service Area FAQs - Page 2

- ◆ Rural Water Apprentice Program - Page 3

CAPITAL IMPROVEMENT UPDATES

Chin Page Road Lift Station

Permitting and easement acquisitions are still in negotiation for the Chin Page Lift Station, while design efforts are advancing toward 100% completion. The team anticipates meeting with the Local Government Commission in March 2026 to move forward with early work packages and procurement.

Shiloh Glenn Lift Station

Excavation and shoring are underway, and installation of the new forcemain and gravity mains continues. The excavation will reach over 30 feet deep, and the access drive is now complete. Surface restoration on Emperor Blvd and Miami is planned for January, pending suitable pavement temperatures. Duke Energy is experiencing challenges bringing power to the site, which may require acquiring easements from NCDOT and adjacent businesses. This could impact construction progress in the coming months.

Wind River Lift Station

The contractor has mobilized to the site, installed fencing, potholed buried utilities, and assembled the bypass forcemain. Bypass pumping and installation of new manholes are scheduled to begin in January 2026.

Outfall Improvements Project

The design consultant has submitted a draft Preliminary Engineering Report (PER). Meanwhile, beaver trapping activities are underway across several easements to support site readiness.

Northeast Creek Modeling

The consultant has submitted the final Technical Memo #3 on Model Calibration and is now preparing to run the model using existing conditions and simulated storm events. A draft report summarizing the results is expected in January.

OPEN POSITIONS

We are hiring! All of the County's open positions can be found and applied to at [County Careers link](#). Contact us with any questions you may have. Currently Utilities is hiring:

- [Operations and Maintenance Specialist II](#)
- [Plant Maintenance Technician](#)



[Utilities Website](#)



919-560-9033



5926 NC Hwy 55 East,
Durham, NC 27713

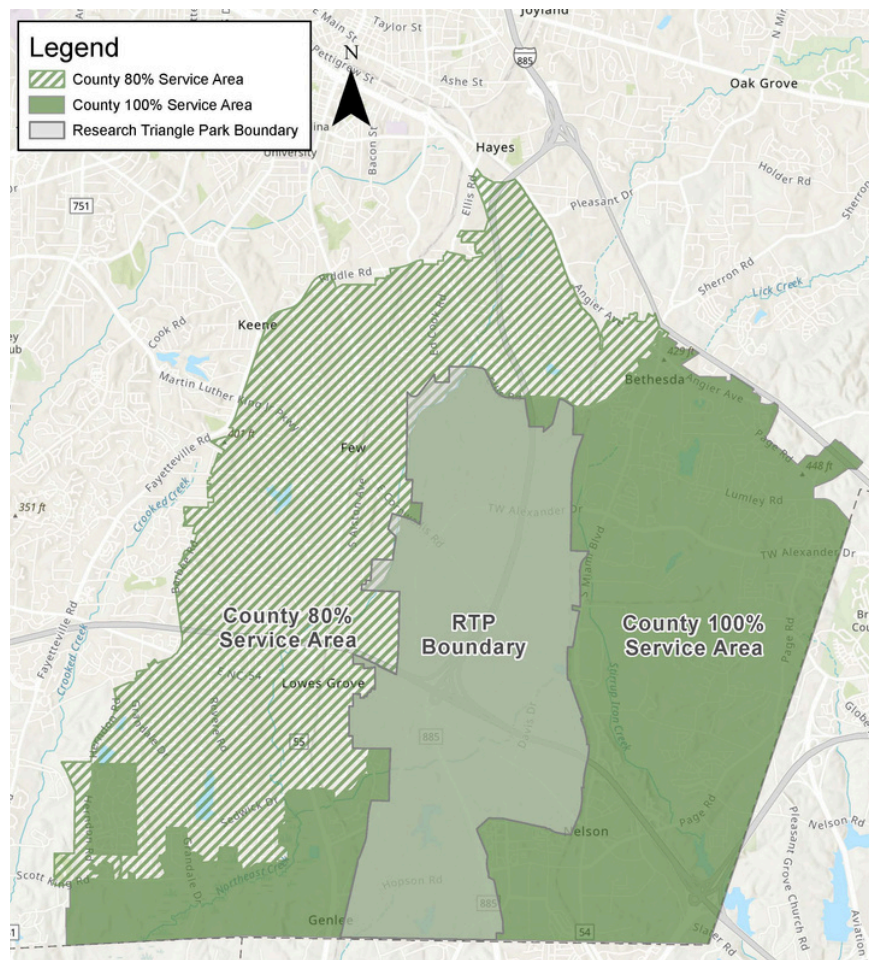
SERVICE AREA FAQs

If you live in Durham County, your sewer service may be provided by Durham County Utilities, Durham City Water Management, or a private utility depending on your location.

How to Find Out:

- Durham County Utilities: The County Utilities service area is outlined by the map below. If you have a question about service to a property in or around this area email utilities@dconc.gov or call 919-560-9033.
- City of Durham Residents: Most properties inside city limits are served by the City of Durham Water Management Department. You can call to confirm at 919-560-1200.

What does it mean to be in the 80% or 100% County Service Area? Read about it in a previous newsletter edition [here](#).



BUILDING THE NEXT GENERATION OF WASTEWATER PROFESSIONALS

3

Durham County Triangle Wastewater Treatment Plant is proud to participate in the North Carolina Rural Water Association (NCRWA) Registered Apprenticeship Program, a statewide initiative designed to train and certify future leaders in water and wastewater operations.

What is the program?

The NCRWA Registered Apprenticeship Program provides structured, hands on training combined with classroom instruction, giving participants the skills and credentials needed for long-term careers in the water industry. Apprentices work alongside experienced mentors, gaining real-world experience while earning a wage and progressing toward certifications.

Durham County's Role

Utilities currently has two apprentices actively engaged in the program. This investment ensures:

- Workforce sustainability for years to come
- Enhanced service reliability for residents and businesses
- Career pathways for individuals entering a vital industry

Learn more about the program and its benefits:

[NC RWA Apprenticeship Program](#)

