



Durham County UTILITIES NEWS



SECOND QUARTER



Capital Improvement Updates - Page 1

Open Positions - Page 1

Website Update - Page 1

Process Highlight; Primary - Page 2

Durham Earth Day - Page 3

Reclaimed Water Highlight- Page 4

CAPITAL IMPROVEMENT UPDATES

Chin Page Road Lift Station

The County is reviewing 30% design drawings and is finalizing the outfall routes while considering cost estimates. Easement acquisition is currently underway.

Slater Road and Page Park Lift Stations

Slater Road and Page Park lift stations are in the final stages of design and easement acquisition is in progress. Construction is expected to begin in summer of 2025.

Outfall Improvements Project

The contract with Kimley-Horn is currently being finalized and outfall evaluations are proposed to begin in spring of 2025.

Triangle Wastewater Treatment Plant Phase IV

The UV equipment RFP is complete and will be advertised on the Durham County E-Bid website [here](#). The EI/EID has been resubmitted with responses to questions.

WASTEWATER FACT

There is a toilet-themed park in Seoul, South Korea. Haewoojae Museum is the world's only toilet-shaped museum.

OPEN POSITIONS

We are hiring! Pursue your passion for water quality and pivot into a career in public utilities. All of the County's open positions can be found and applied to at [County Careers link](#). Contact us with any questions you may have. Currently Utilities is hiring:

- [Utility Superintendent](#)
- [Operations and Maintenance Specialist 1 - Provisional](#)
- [Operations and Maintenance Specialist II](#)

! DURHAM COUNTY WEBSITE UPDATE !

Durham County is currently in the process of modernizing and redoing the website. The new site is anticipated to launch in April and may result in some changes to links and the email listserv. Stay tuned for any announced changes.



[Utilities Website](#)



919-560-9033



5926 NC Hwy 55 East,
Durham, NC 27713

Treatment Process Highlight:

Primary Treatment

2

What is Primary Treatment?

Primary treatment of wastewater is the second stage of wastewater treatment (after preliminary treatment) and focuses on removing suspended solids and organic matter through physical processes. The main goal is to reduce the solid content and biochemical oxygen demand (BOD) before the water moves on to secondary treatment.

What does it involve?

Key Processes in Primary Treatment:

- **Sedimentation:** Wastewater is held in large settling tanks (primary clarifiers), allowing heavier solids to settle to the bottom as sludge, while lighter materials float to the top.
- **Sludge Removal:** The settled sludge is collected and sent for further treatment.
- **Scum Removal:** Oils, grease, and floating debris are skimmed off the surface.

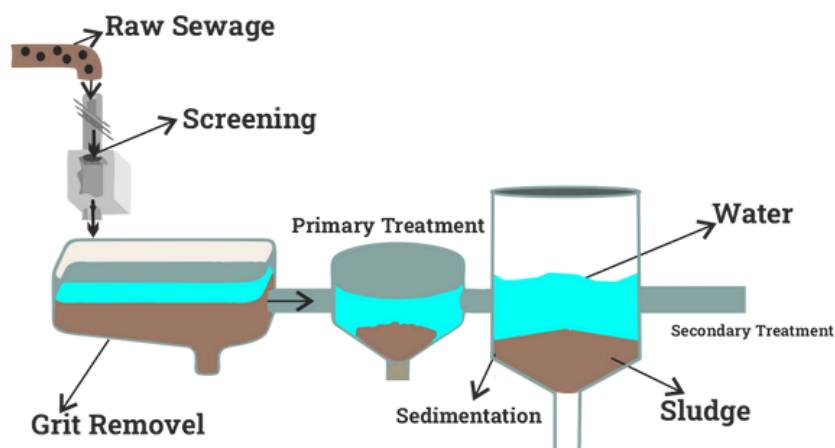


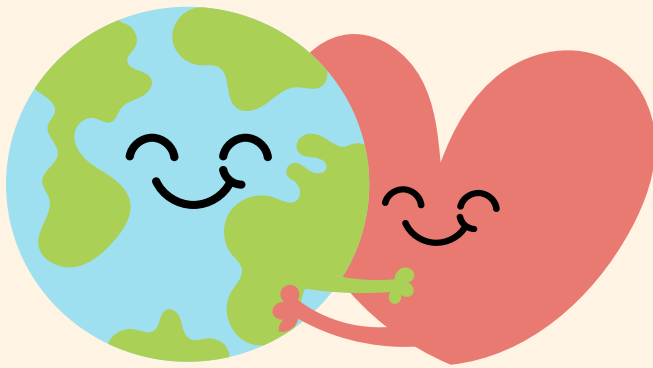
Image Source

DURHAM EARTH DAY

3

OUR POWER – OUR PLANET

Join the City of Durham and Durham County, as we come together to honor and protect our planet! This year's theme, "Our Power, Our Planet," highlights the role we all play in creating a sustainable future. Learn more [here](#).



April 27th

12pm–5pm

Durham Central Park,

501 Foster Street

Free to the Public

See the Durham County Utilities table to learn about Fats, Oils, and Grease in the sewer and their impact on the planet!



SOME EARTH DAY EVENTS

Market

Attendees will browse and shop from our local, hand-made green goods and crafts.

Free Document Shredding

The City of Durham will provide services for shredding documents. [Learn more.](#)

Family Fun Zone

Kids will have a blast while engaging with the natural world!

Earth Day Parade

The parade lineup begins at 2:15 p.m. and starts at 2:30 p.m. sharp!

RECLAIMED WATER

Reclaimed or recycled water is a sustainable way to conserve drinking water. Instead of letting treated wastewater go to waste, it's cleaned, filtered, and repurposed for non-drinking uses like irrigation, industrial cooling, and even replenishing natural waterways.



BENEFITS



Conserves Drinking Water -
Reduces the demand on freshwater sources.



Enhanced Water Quality - Diverts wastewater away from waterways, and reduces nutrient load.



Cost-Effective -
Can lower water bills for communities and businesses.

[VISIT OUR WEBSITE HERE FOR MORE INFORMATION](#)